



## التقرير اليومي الخاص بأوضاع اللاجئين الفلسطينيين في سورية

Daily report on the situation of Palestinian refugees in Syria

FRIDAY 18-09-2015

NO.1050

### *"Isis Releases Palestinians were detained While Heading to Turkey from Deir Al Zoor"*



- A Palestinian from Al Quds Brigade Died Due to Clashes in Aleppo
- Bombing Khan Al Sheih Adjacent Farms with Explosive Barrels
- Fire Breaks out at a Bakery in Al Nirab Camp for Palestinian Refugees in Aleppo
- The Syrian Security Arrested a Palestinian Refugee and His Family While Heading to Turkey

Email: [Reports@actionpal.org](mailto:Reports@actionpal.org)

Mobile: 00447447423737

Phone: 00442084530919 00442084530994



### **Victims**

*The Palestinian refugee Mahmoud Al Sha'er died due to clashes between the Regular Army and the Syrian Opposition at AL Zahraa neighborhood in Aleppo. He is from Al Nairab camp in Aleppo and a member of Al Quds Brigade which is loyal to the Syrian Army. It is noted that Al Quds Brigade is one of the military groups that was formed during the war in Syria and fights besides the Regular Army in more than one point in northern Syria.*

### **Recent Updates**

*ISIS released a group of Palestinian refugees from Daraa camp after detention for more than two weeks. A group of refugees left the areas of the Syrian Opposition south of Syria and went through Al Badeya road to Alleha because they are areas out of Regular Army control till they reached AL Mayadeen area in Deir Al Zoor governorate, where they were arrested by ISIS.*



*It is referred that the fear of arrest by the Syrian Regime members and checkpoints prompted dozens of Palestinian refugees to go through far*



*roads such as Al Badeya road though its danger, difficult terrains, and the high costs of individual smuggling through this road. Some families and individuals are being pursued by the Syrian Security forces whether to the compulsory military service at the PLA or a member of these families participated in the fighting against the Syrian Army. The families were forced to choose alternative roads to go far from the sights of the Syrian regime.*

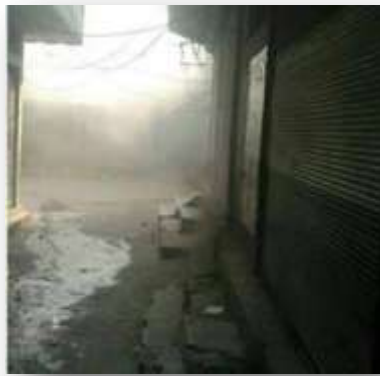
*It is noted that the Syrian Regime arrests anyone trying to travel towards the Opposition areas in the north of Syria to reach Turkey.*

*On the other hand, the adjacent farms to Khan Al Sheih camp for Palestinian refugees in Damascus suburb were exposed to bombing with at least three explosive barrels which led to a state of panic and tension amongst the residents fearing the bombing reaches their camp. The Regular Army still closes all main roads that connect the camp with the Capital center Damascus which forces the families to go through Zakia-Khan AL Sheih road. The road is the only road for the residents to go through though the risks of frequent targeting and bombing when they pass through it.*





*In Aleppo, a fire broke out yesterday in Al Hurany Bakery at Al Nairab camp for Palestinian refugees in Aleppo. According to the residents, the fire was due to electricity which only led to material damages. It is referred that Al Nairab camp is under the control of the Regular Army and the Palestinian groups loyal to it, where during the last months several clashes broke out between the Opposition and the Regular Army.*



*The fire broke out at Al Nairab camp*

### ***Detention***

*The Regular Army Checkpoints at Latakia city arrested the Palestinian Syrian refugee Ahmed Gheith and his wife and children. They were heading from Lebanon to Syria towards Turkey. It is mentioned that Ahmed was a refugee at Al Burj Al Shamaly in Lebanon. It is referred that Turkey became the destination of thousands of Palestinian Syrian refugees, who enter Turkey illegally due to the stop of visas by the Turkish authorities since more than two years.*

### ***Numbers and Statistics till 17/9/2015***



<http://www.facebook.com/ActGroup.PalSyria>

- *15,500 Palestinian Syrian refugees in Jordan, 45,000 Palestinian Syrian refugees in Lebanon, and 6,000 refugees in Egypt, according to the UNRWA's statistics till July 2015.*
- *At least 36,000 Palestinian Syrian refugees have reached Europe during the last 4 years.*
- *The Yarmouk Camp: - Siege, imposed by the Regular Army and PFGC, continued for 807 days respectively. In addition, power cuts continued for more than 877 days, water was cut for 367 days respectively. The number of victims due to the siege has reached to 182 victims.*
- *Al Sbeina Camp: - Regular Army is still preventing the residents of the camp to return back to their houses for 669 days respectively.*
- *Handarat Camp: - Residents have left the camp for 870 days after the Syrian Opposition Groups controlled it.*
- *Dara'a Camp: - It is now almost 514days without water and 70% of its buildings were demolished.*
- *Jarmana, AL Saieda Zainab, Al Raml, Al Aedein Camps in Homs and Hamma: - A relatively quiet situation in light of the economic crises.*
- *Khan Al Sheih Camp: - Roads linking the camp to the city center are still closed except for Zakia- Khan Al Shieh road.*